

When cropping, try not to amputate your model. Instead, use the green lines to create a more natural crop.



We used one flash head and large softbox to light our model from this side. . .

. . .with a full-length reflector this side to bounce light back here

We fixed our exposure in Manual mode and for all our portraits it was 1/60 sec at f/13, and ISO100



Work with your subject while shooting to ensure great eye contact and an inviting smile

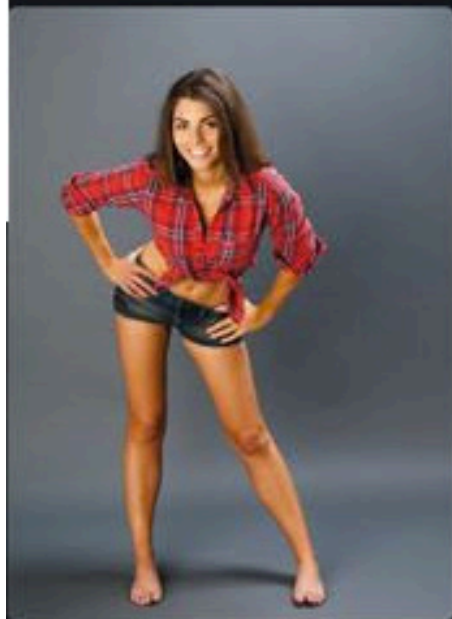


Try one arm rested on their head - this also stretches out the stomach



For all our portraits we used a Canon EF 24-105mm f/4L IS USM, but any standard zoom lens will do the job

One knee angled in front of the other can add extra curves to the body



Try simply getting your subject to tilt their head to one side for a better pose



Hands positioned on thighs for added sensuality

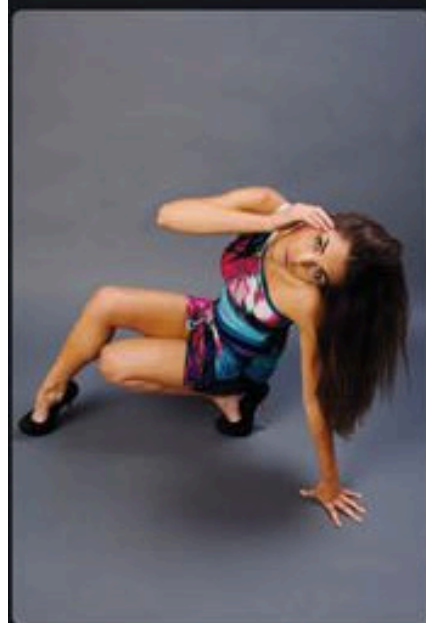
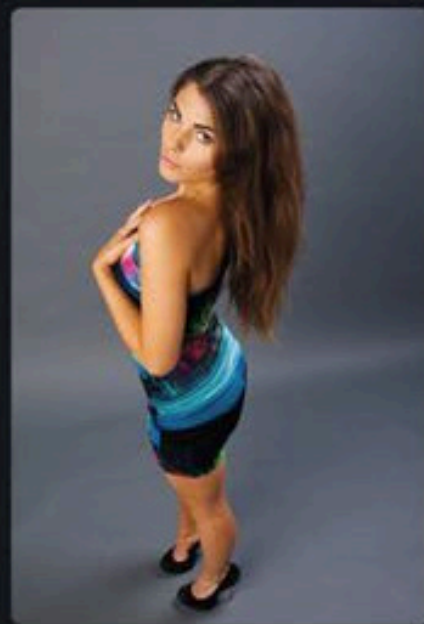
Sitting sideways shows off more of their legs!







**Play with your perspectives,
Shoot high and low**



Use a small step ladder to get above your subject to shoot down for more creative portraits

Getting your subject to look upwards makes them look more submissive and innocent

Your subject's choice of clothing and footwear will have a dramatic impact on your portraits



Always focus on the eyes when composing your portraits

Try everything, from grinning to growling, to get the best shots



www.digitalcameraworld.com

Remember to keep an eye on everything in the frame including facial expressions.